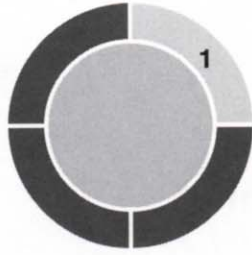
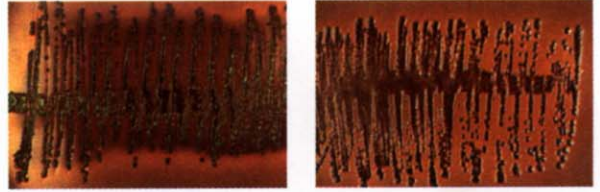


How to Read a Bullseye Urine Plate

Start at
Agar #1



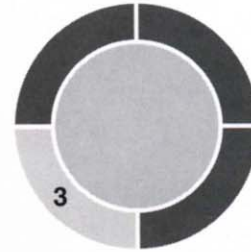
CHOOSE



Can **Not** See Through Bacteria

GO TO

Agar #3



CHOOSE

No Growth
Green

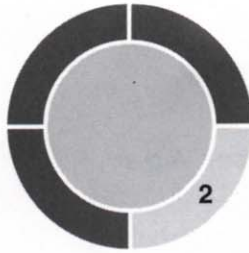


Pinpoint Growth
Green to Blue



GO TO

Agar #2



CHOOSE

Yellow



Yellow Colonies
w/Red Areas



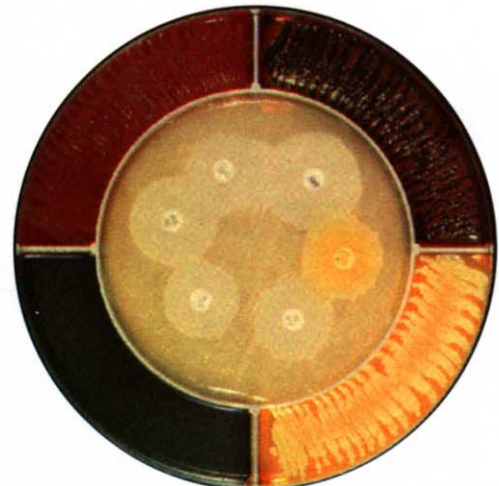
ANSWER:
E. COLI



Often sensitive to all antibiotics.

GO TO

Determine
Sensitivity



Often has green metallic sheen on Agar 1.