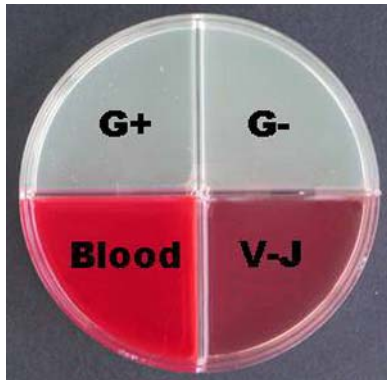


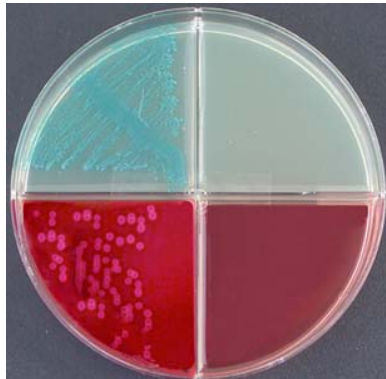


**MS
Spectrum™
Mastitis Culture System**

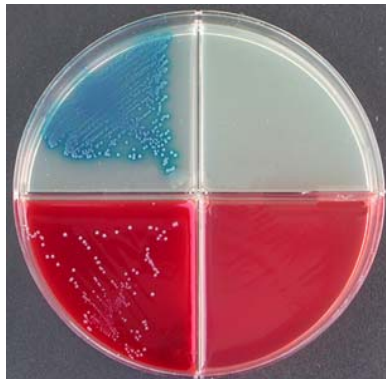
Veterinary Interpretation Guide



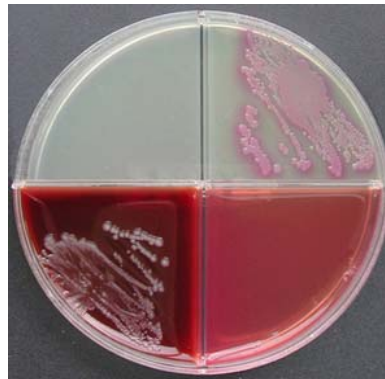
Spectrum MS plate showing Gram + and Gram - Spectrum agars, TSA/Blood, and Vogel-Johnson Staph select agars.



Strep. agalactiae: Light blue pin-like colonies. TSA/Blood: Pinpoint colonies w/clear zone of beta hemolysis.



Strep. uberis: Dark blue small colonies. TSA/Blood: Small, grayish colonies with some adjacent "greening".



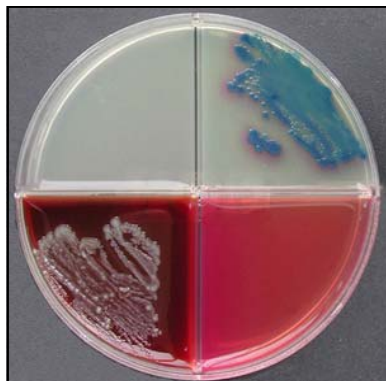
E. coli: Medium to large pink to red colonies. Some rare species may produce black colonies on VJ agar.



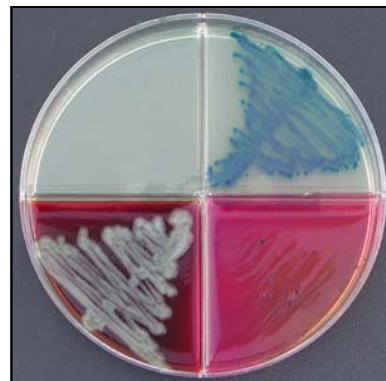
Staph. aureus: Mauve colonies. Some species white to light yellow. VJ: Black colonies surrounded by yellow zone.



Proteus mirabilis: Clear to slightly orange colonies surrounded by brown pigment. TSA/Blood: Gray mucoid swarming growth.



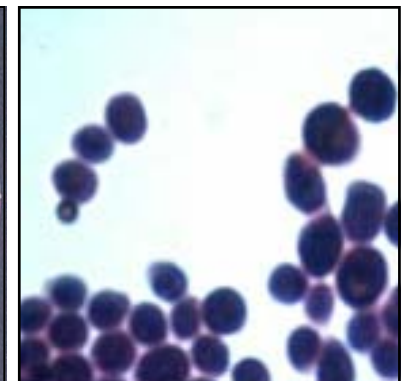
Enterobacter spp: Large metallic blue colonies surrounded by slight pink halo.



Klebsiella pneumoniae: Medium metallic blue colonies. +/- pink zone. Some species may produce black colonies on VJ agar with no color change.



Candida albicans (Yeast): Often grows on all quadrants especially after 24 hours. Confirm with Gram stain.



Gram Stain of C. albicans: Note large purple budding cells.

Note: All organisms shown have been grown in pure culture. Mixed cultures should be interpreted with caution. The Spectrum MS Culture System is for veterinary use only and is intended as an aid in the identification of certain common pathogens. Presumptive results should be verified using traditional culture methods.